

Fabric Trim Options

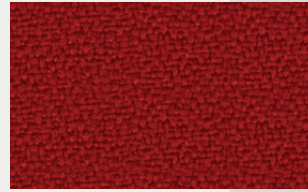
Xtreme - Made from 100% Recycled Polyester



Tarot YS084



Tobago YS030



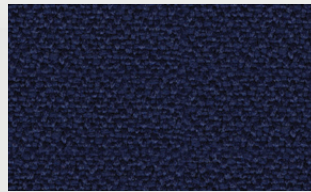
Panama YS079



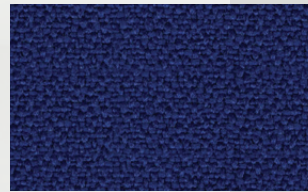
Windjammer YS047



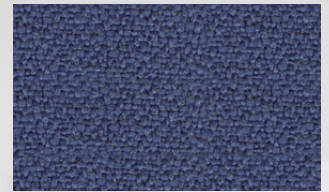
Havana YS009



Costa YS026



Curacao YS005



Martinique YS004

24/7+



Night WK012



Forever WK017

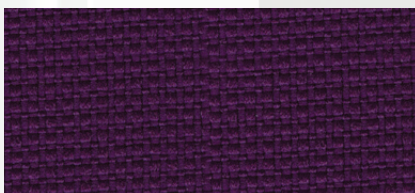


Hour WK001

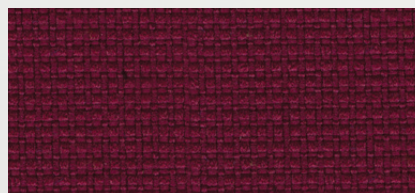


Perpetual WK013

Urban - Made from 100% Recycled Polyester



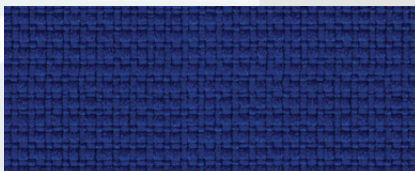
Graffiti YN204



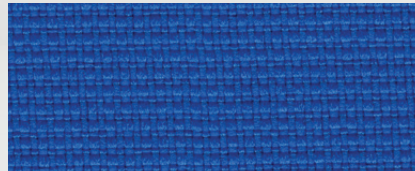
Freeway YN211



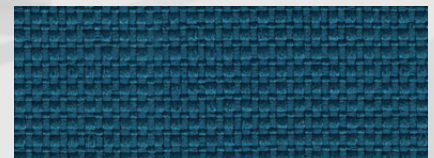
Bench YN091



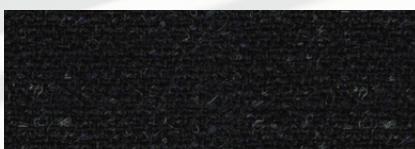
Conurbation YN082



Penthouse YN202



Boulevard YN160



KAB Storm

Fabric Trim Options

Xtreme	
Composition	100% Recycled Flame Retardant Polyester
Weight	310g/m ² ±5% (435g/lin.m. ±5%)
Abrasion Resistance	100,000 cycles (800g/12kpa) Martindale
Flammability	BS EN 1021 - 1 :2014 (cigarette) BS EN 1021 - 2 :2014 (match) BS 7176 : 2007 Low Hazard BS 5852 : 2006 Section 4 Ignition Source 5 BS 7176 : 2007 Medium Hazard <i>Note: Flammability performance is dependant on foam used</i>
Maintenance	Washable to 60°C. Vacuum regularly. Wipe clean with a damp cloth or shampoo using proprietary upholstery shampoo.
Colour Matching	Batch to batch variations in shade may occur within commercial tolerances

Urban	
Composition	100% Recycled Flame Retardant Polyester
Weight	320g/m ² ±5% (450g/lin.m. ±5%)
Abrasion Resistance	100,000 cycles (800g/12kpa) Martindale
Flammability	BS EN 1021 - 1 :2014 (cigarette) BS EN 1021 - 2 :2014 (match) BS 7176 : 2007 Low Hazard BS 5852 : 2006 Section 4 Ignition Source 5 BS 7176 : 2007 Medium Hazard <i>Note: Flammability performance is dependant on foam used</i>
Maintenance	Washable to 60°C. Vacuum regularly. Wipe clean with a damp cloth or shampoo using proprietary upholstery shampoo.
Colour Matching	Batch to batch variations in shade may occur within commercial tolerances

24/7+	
Composition	50% Polyamide, 33% Virgin Wool 10% Recycled Flame Retardant Viscose 7% Viscose
Weight	435g/m ² ±5% (610g/lin.m. ±5%)
Abrasion Resistance	In excess of 400,000 Martindale cycles with a 10 year guarantee of wearability (full details available)
Flammability	BS EN 1021 - 1 :2014 (cigarette) BS EN 1021 - 2 :2014 (match) BS 7176 : 2007 Low Hazard BS 5852 : 2006 Section 4 Ignition Source 5 BS 7176 : 2007 Medium Hazard <i>Note: Flammability performance is dependant on foam used</i>
Maintenance	Vacuum regularly. Professionally clean or wipe clean with a damp cloth.
Colour Matching	Batch to batch variations in shade may occur within commercial tolerances

KAB Storm	
Composition	55% Nylon, 27% Viscose, 18% Wool
Weight	342g/m ² ±5% (460g/lin.m. ±5%)
Width	135cm ± 2% Usable
Abrasion Resistance	200,000 cycles (800g/12kpa) Martindale
Flammability	FMVSS 302 BS EN 1021 - 1 :2014 (cigarette) BS EN 1021 - 2 :2014 (match) BS 7176 : 2007 Low Hazard <i>Note: Flammability performance is dependant on foam used</i>
Maintenance	Vacuum regularly and wipe clean with a damp cloth. Generally ex-stock. Custom colours available.
Colour Matching	Batch to batch variations in shade may occur within commercial tolerances



Xtreme and Urban are EU accredited fabrics made from 100% recycled polyester savings virgin raw materials, reducing waste to landfill and minimising our damage to the environment. Life Cycle Assessment has confirmed significant environmental improvements of recycled polyester compared to virgin polyester.

Made using sustainable manufacturing techniques, including green electricity, comprehensive energy and effluent management, these fabrics leave a lighter environmental footprint.

KAB UK - Kab Seating Ltd

Northampton
Tel: +44 (0) 1604 641521
E.mail: infouk@cvgrp.com
www.kabseating.com

KAB Sweden - Kab Seating AB

Stockholm
Tel: +46 (0) 8 554 427 00
E.mail: infosweden@cvgrp.com

KAB Belgium - Kab Seating SA

Saintes
Tel: +32 (0) 2 367 13 10
E.mail: infobelgium@cvgrp.com

KAB France - Sales Office

Chatillon, Paris
Tel: +33 (0) 1 40 92 97 40
E.mail: infofrance@cvgrp.com

KAB Australia - Kab Seating Pty. Ltd

Brisbane
Tel: +61 (0) 7 3344 0500
E.mail: infoaustralia@cvgrp.com

CVG China - CVG Vehicle Components


Shanghai
Tel: +86 21 5958 5801
E.mail: infochina@cvgrp.com

CVG World Headquarters

New Albany, Ohio, USA
Tel: (614) 289-5360
E.mail: info@cvgrp.com
www.cvglp.com

CVG National Seating USA

Vonore, Tennessee
Tel: +1 800 354 9621
E.mail: infoamerica@cvgrp.com

 [Twitter@KABOffice](https://twitter.com/KABOffice)

 www.YouTube.com/KABSeatingUK